

WEST·BOND, INC.

*LUXURY II*



**A Bright New Idea**

*A New Light for Microscopes*

*Continuing a Tradition of Quality*

# LUXURAY II

West-Bond's "Luxuray II" is an array of LED bulbs, each focusing through a built-in lens, and arranged into a pattern focusing at the microscope working distance. The array extends around the objective through an arc of 150 degrees. Adapters, specific to different microscope model ranges, attach it, and when used alone, a single array can be rotated about the objective as needed. Alternately, two arrays can be stacked for additional light. Greater brightness is accessible in each second generation array through a second, higher intensity switch position.

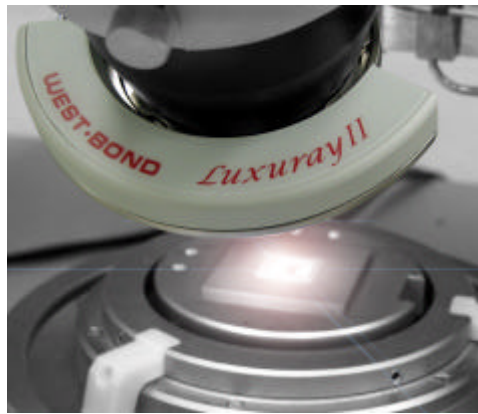


A single power supply provides regulated 12 volts DC from an input of 100 to 220 volts AC with capacity for two illuminator arrays. Both voltage and current are closely controlled to ensure long life of the LED's.

Using this illuminator is a whole new experience; showing the work with accurate coloring and superb visibility. This unit enables variation of the incident light direction and intensity, it is cool to the touch, and it is coated with an ESD protected finish. We offer this illuminator with our machines, and also as a stand-alone product.

The Luxuray II cold light source could replace the following:

- Fluorescent lights which create heat and can affect certain devices and processes, and illuminate the package with yellowish hues.
- Halogen lights creating large amounts of heat.
- Fiber-optic lights requiring large vibrating boxes containing the light source and cooling fans to reduce excessive heat.
- And of course, the old standard fixtures containing incandescent light bulbs possibly connected to the machine.



The Luxuray II can be adapted to the following applications:

- Inspection Stations
- Probing Stations
- Reworking Stations
- Soldering Stations
- Parallel Gap Welders
- Die Attach Machines
- Wire Bonders

And wherever microscopes are used.

## STANDARD SPECIFICATIONS

- Focal Distance: 80 to 120mm
- Power: 12 Volts DC from input voltage of 100-220 AC
- Manual Rotation Feature
- ESD Protection: Protection against Electrostatic Discharge
- Selectable for 12 or 21 LED's on at one time
- Single Array: 150° arc around microscope
- Double Array: 300° arc around microscope
- High / Low intensity settings

## Current Adapters Available for:

- |   | Single    | Double      |
|---|-----------|-------------|
| • Olympus: SZ30, SZ40, & SZ60   | -10265    | / -10267    |
| • Olympus: SZ51, & SZ61 Series  | -10265    | / -10267    |
| • Nikon: SMZ-1, & SMZ-2   | -10265    | / -10267    |
| • Nikon: SMZ-660, & SMZ-645   | -10265.01 | / -10267.01 |
| • Nikon: SMZ800, & SMZ1000<br>w. 0/7x, 1.0(non-Apo) or 0.5X Objective | -10265.01 | / -10267.01 |
| • Leica: S4E, S6, S6D, S6E & S6T                                      | -10265.02 | / -10267.02 |
| • Leica: SZ1, SZ2, SZ3M, SZ4, SZ5                                     | -10265.03 | / -10267.03 |
| • Wild / Leica: M3, M5, M7 & MZ6                                      | -10625.04 | / -10627.04 |

Contact the factory if your scope is not listed

[www.westbond.com](http://www.westbond.com)

WEST-BOND, INC.  
WEST-BOND INTERNATIONAL INC.

1551 S. Harris Court Anaheim, California 92806, U.S.A.  
Phone: (714) 978-1551  
Fax: (714) 978-0431  
E-mail: sales@westbond.com