

WEST·BOND. INC.



70PTE SERIES

WIRE PULL TESTER

Continuing a Tradition of Quality

70PTE – Manual Wire Pull Test Machine

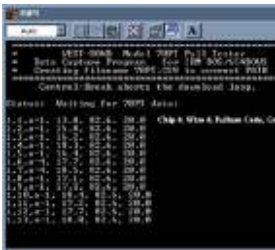


UNLIMITED DEEP REACH access to remote bond targets on large packages with WEST-BOND'S new throatless chassis and micromanipulator designs. All machine components, circuitry, and enclosures are arrayed above the horizontal work area, eliminating any restrictions to package size or shape. Manual "E" Series models are available for all microwave, semiconductor, R.F., and hybrid production, and are ideal for repair station or laboratory use.

EXCEPTIONALLY convenient means of testing the tensile strength of fine wire bonds. Reach wires in any quadrant on packages of unlimited size with a rotatable micro-hook, and test in either destruct or non-destruct modes with motorized, microprocessor controlled precision through a range of 100 grams.



PROGRAMMING a device, the users can select the speed, drop of the work and data output options. Program values, action prompts, and fault codes are exhibited on the easy to read 4 lines, 40 characters LCD sequentially with machine operation. Pull Test data has a resolution of 0.1 grams with an accuracy of +/- 0.2 grams.



FEATURES include programmable speed, default error codes, pure vertical Z, pneumatic braking of all axes during testing and mechanical down stop to keep hook from damaging delicate surfaces. Direct output to a computer via RS-232 interface with capture software.



STANDARD SPECIFICATIONS

CONTROL LOGIC: Motorola 68000 Microprocessor
MEMORY: Battery back-up RAM
DATA ENTRY: Selector switch
Z TOOL RANGE: 0.5625 inch
Z ENCODER RESOLUTION: 0.002 inch
TEST FORCE RANGE: up to 100 grams
TEST RANGE: 0.125" Depth, 360° Rotation
RESOLUTION: 0.1 gram; **ACCURACY:** +/- 0.2 grams

ESD PROTECTION: Protection against Electrostatic Discharge
DISPLAY: 4 line, 40 character LCD
MICROMANIPULATOR: Dual counterbalanced, single lever, 8:1 ratio
COMPUTER INTERFACE: RS-232 Windows compatible (optional)
MICROSCOPE: Selection available (ESD types available)
ILLUMINATOR: Selection available (ESD types available)
WORK HOLDERS: Wide selection plus custom fabrication services
DIMENSION: W=24.0" x D=21.25" x H=11.625"
WEIGHT: 70 lbs uncreated, or 140 lbs accessorized and created

www.westbond.com

WEST-BOND, INC.
WEST-BOND INTERNATIONAL, INC.

1551 S. Harris Court Anaheim, California 92806, U.S.A.
Phone: (714) 978-1551
Fax: (714) 978-0431
E-mail: sales@westbond.com